



## GRANTS & SCHOLARSHIPS POLICY COMMITTEE

### Overall:

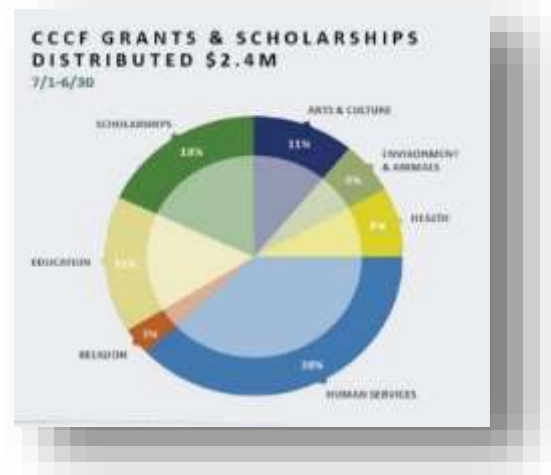
- 1 - Ensure sound, timely, legal grants, scholarship and award allocation processes, in alignment with Community Foundation overall plan, focus, aims, key operating principles, and parameters
- 2 - Annually recruit volunteers for 1 year service on Focused Grant & Scholarship Panels
- 3 - Each Focused Grant/Scholarship Panel may be chaired by a Grant & Scholarship Policy Committee member
- 4 - If desired, serve as a member of selected Grant & Scholarship Panels

1. With an understanding of overall goals, priorities, and core values of the Community Foundation, **discern/verify annual grantmaking priorities**, processes, focus, and dollar ranges, in alignment with overall focus
2. Assure an **open, straightforward** grant and scholarship award application and awarding process, in line with IRS regulations
3. Assure that CCCF provides reliable, current information about community needs and nonprofits best-positioned to meet those needs, to support **smart grantmaking** decisions
4. **Recruit a diverse cadre of volunteers, in agreed-upon target markets**, from throughout Chester County to serve 1-year terms on Focused Grant Panels, to increase understanding of the work of the nonprofit sector and promote smart giving
5. **See that systems are in place to track and evaluate** the Community Foundation's grantmaking, at levels commensurate with the size of the grants



## CCCF Grants Processing

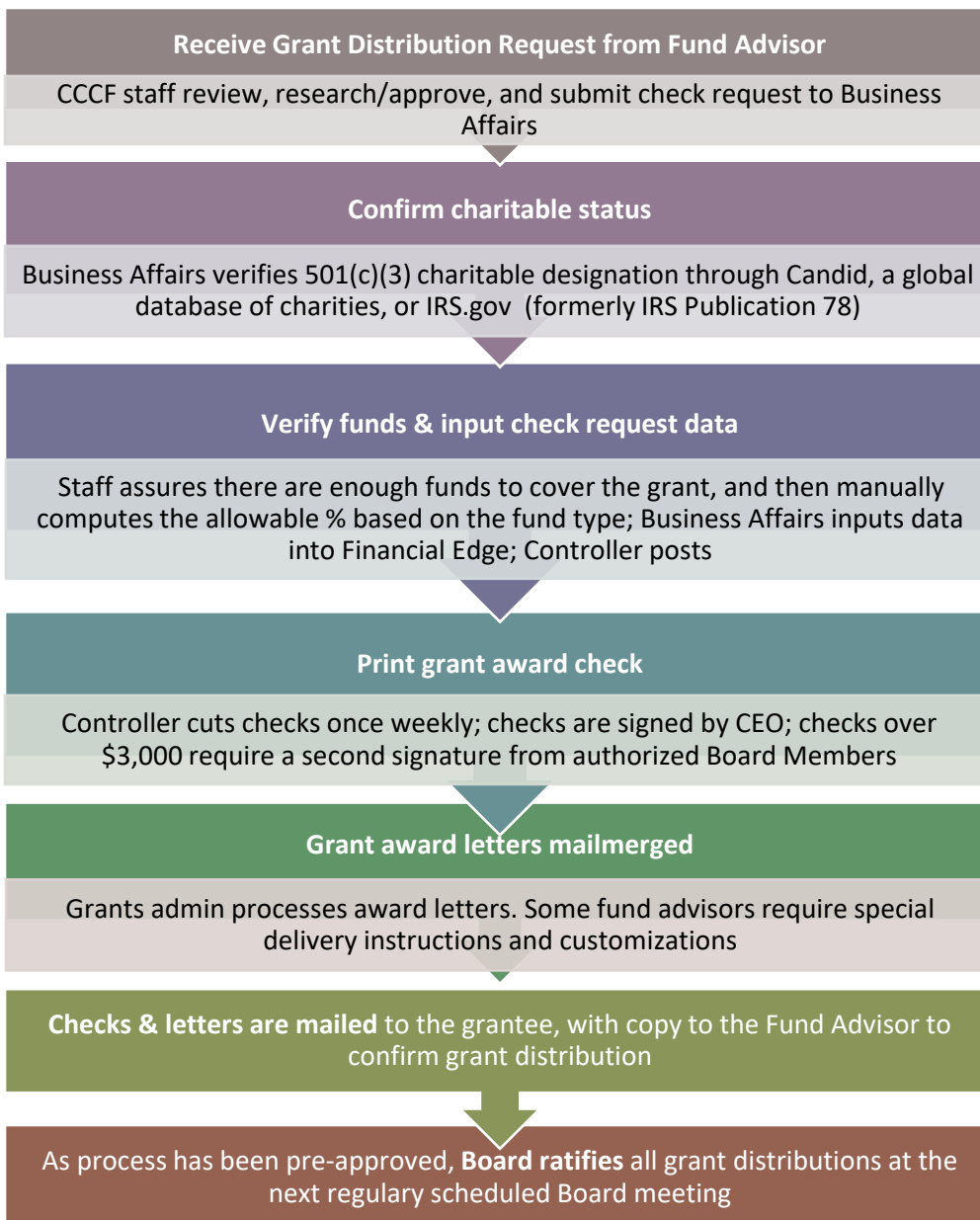
- ❖ Since our 1994 founding, the Chester County Community Foundation has distributed nearly **\$40 million** via **9,500 grants and scholarships**.
- ❖ In FY18, the Community Foundation awarded **\$2.4 million** in **grants and scholarships**.



### Types of Grantmaking Funds

Endowed Funds	Quasi-Endowed Funds	Provisional Funds
Up to 5% grant payout for perpetuity, to assure funds are available forever. Funds are invested in the stock market to accrue pro-rated earnings share.	Up to 20% payout annually. Funds are invested in the stock market to accrue pro-rated earnings share.	Can be paid out 100% in full at any time. Not invested. Do not accrue earnings.

### CCCF Grant Distribution Process



#### DUE DILIGENCE: SMART GIVING

**Level 1: Basic Compliance - 501 (c) (3)**

**Level 2: Organizational Health & Aims**

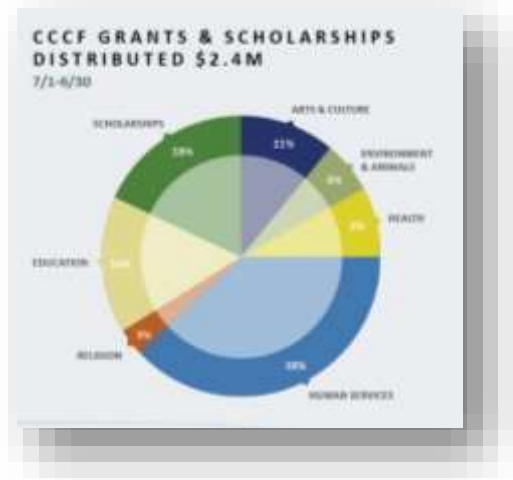
- Organizational history & track record
- Constituents served
- Governance & executive leadership
- Organizational vision & strategy
- Plans, initiatives, outcomes, evaluation
- Human resources: staff & volunteer
- External communications
- Relationships, partnerships & networks
- Financial health

**NOTE:**  
*Special Circumstances:*  
 - International Grants  
 - Government Entity Grants  
 - Donor Benefits/Private Inurement

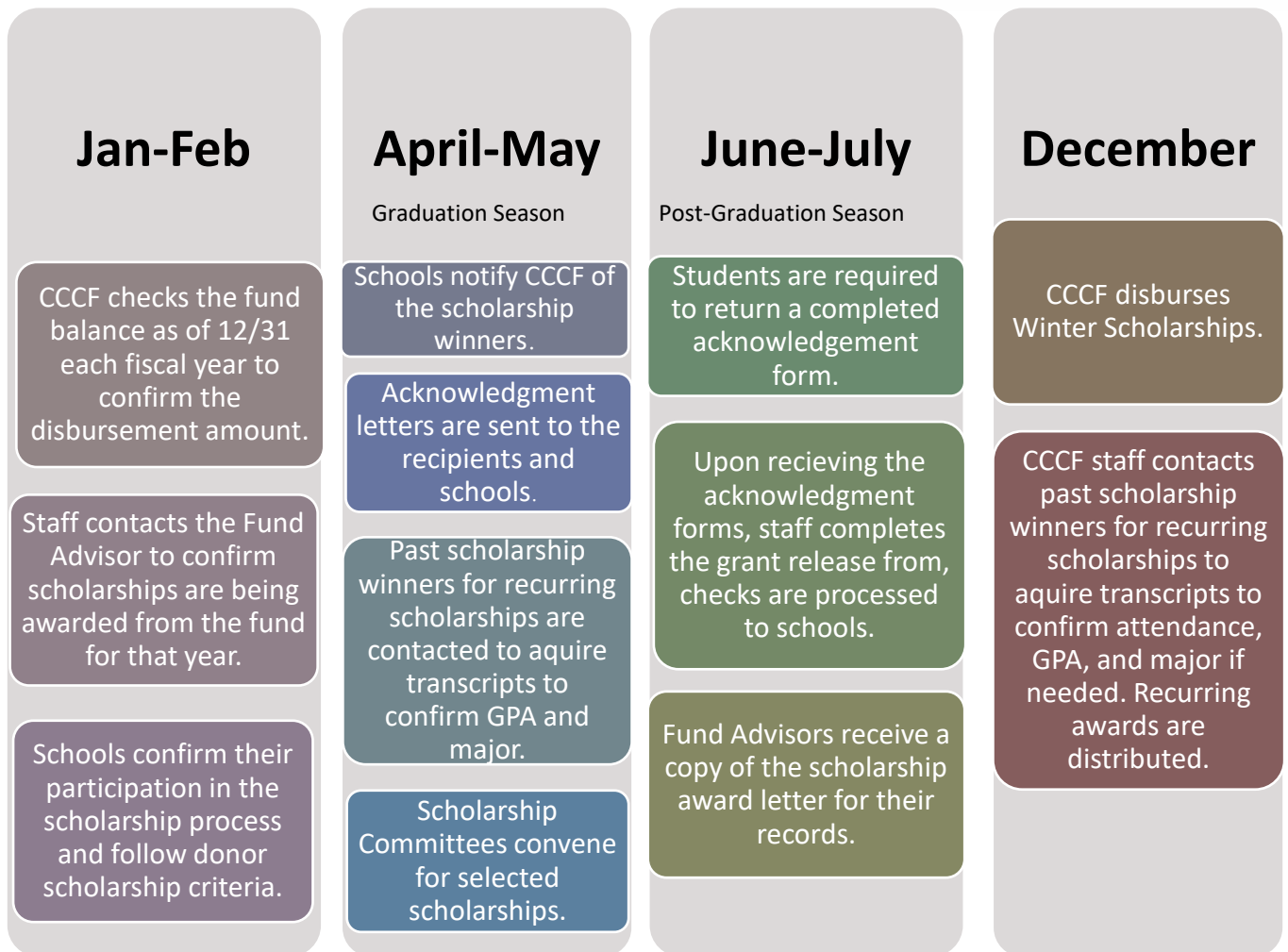


## CCCF Scholarship Processing *(per IRS Guidelines for scholarships)*

- ❖ Since our 1994 founding, the Community Foundation has distributed @**\$40 million via 9,500 grants and scholarships.**
- ❖ In FY18, the Community Foundation awarded **\$2.4 million** in grants and scholarships, with **210 scholarships totaling \$425,000.** (\$145,000 of the total represents Newlin Foundation Scholarships.)
- ❖ **90% of scholarships** are granted with the assistance of schools in the community.



### CCCF Scholarship Process and Timeline



# SMART GRANTMAKING: DUE DILIGENCE AREAS

## Level 1: Basic Compliance/501c3

## Level 2: Performance

- Organizational history & track record
- Constituents served
- Governance & executive leadership
- Human resources: staff & volunteer
- Organizational vision & strategy
- Plans, initiatives, outcomes, evaluation
- Relationships, partnerships & networks
- External communications
- Financial health



1. Staff due diligence
2. Smart Giving Circle meetings
3. Family meetings with Donor Advised Fund families
4. Grant Panels: *(see below)*

