

COMMUNITY CONVERSATIONS

Join us on Zoom to engage in a conversation about voting rights.

TUESDAY, SEPTEMBER 27, 2022 AT NOON



THANKS TO OUR THOUGHT LEADERS



Debbie Bookman (she/her)
Chester County Prothonotary



Karen Barsoum (she/her)
Director, Chester County Voter Services



Cheryl Miles (she/her)
Chairwoman, Black Women of Chester County In Action

SCHEDULE

12 | Welcome
12:05 | Topic Overview
12:25 | Videos
12:45 | Breakout Rooms

THANKS TO OUR PROMO PARTNERS







October 24: Last day to register

November 1: Last day to apply for mail-in ballot

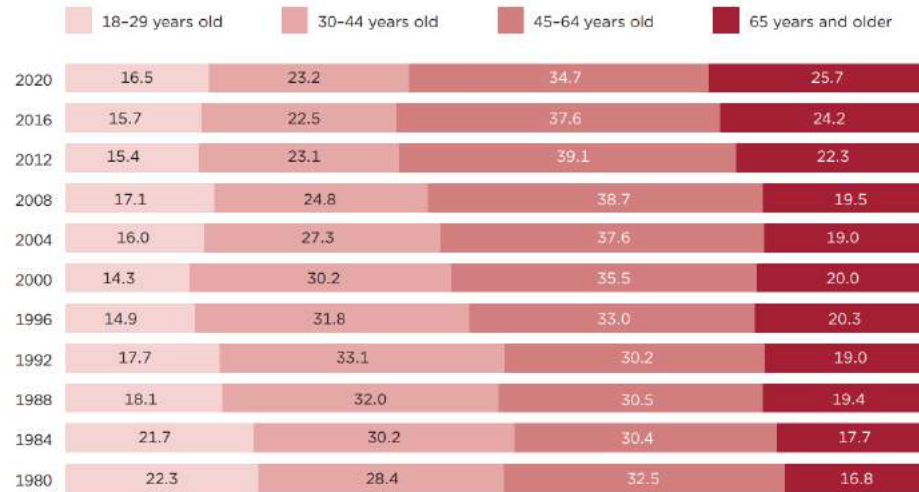
November 8: Election Day

For more information about voting this November, visit
<https://www.vote.pa.gov/About-Elections/Pages/Upcoming-Elections.aspx>

WHO'S VOTING?

<https://www.census.gov/content/dam/Census/library/publications/2022/demo/p20-585.pdf>

Figure 2.
Composition of American Voters by Age: Presidential Elections, 1980-2020
(In percent)



Source: U.S. Census Bureau, Current Population Survey, November 1980-2020.

Figure 3.
Composition of American Voters by Race and Hispanic Origin: Presidential Elections, 1980-2020
(In percent)



Note: Other race, non-Hispanic includes non-Hispanic Asians from 1980-2000.
Source: U.S. Census Bureau, Current Population Survey, November 1980-2020.

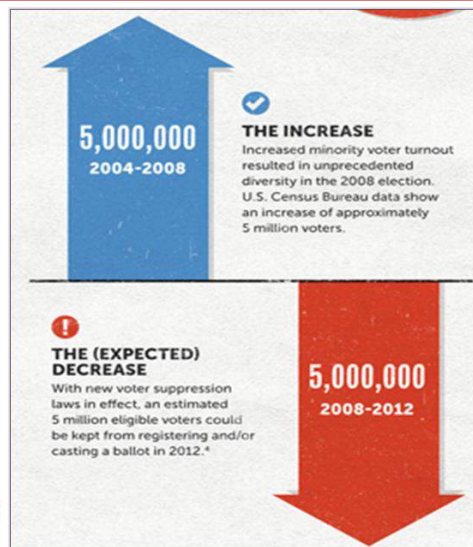


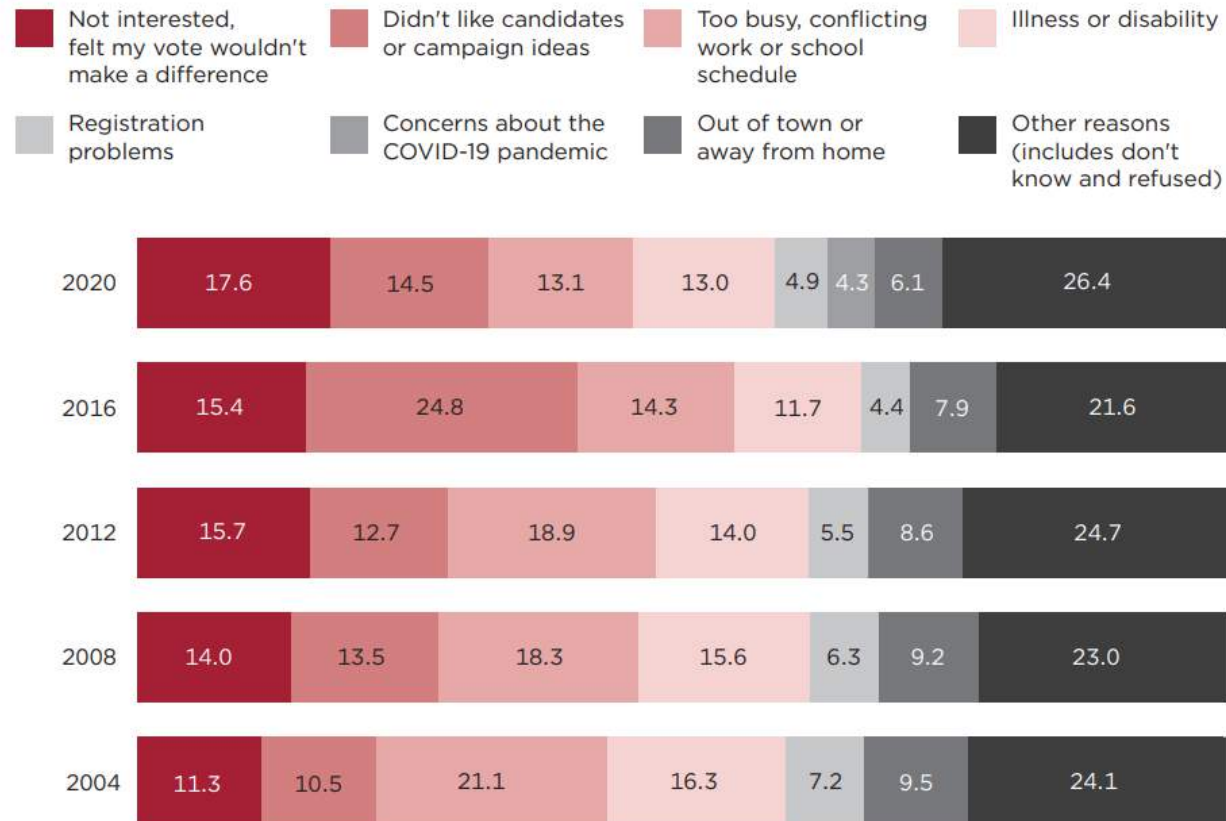
Table 2.
Registration and Voter Characteristics: 2020
(Numbers in thousands)

Characteristic	Citizen voting-age population		Registered		Voted		Over- or under-representation ¹
	Number	Percent	Number	Percent	Number	Percent	
Total	231,600	100.0	168,300	100.0	154,600	100.0	X
Age							
18 to 29	47,040	20.3	29,400	17.5	25,450	16.5	-3.9
30 to 44	55,630	24.0	39,790	23.6	35,810	23.2	-0.9
45 to 64	75,590	32.6	57,230	34.0	53,650	34.7	2.1
65 and older	53,330	23.0	41,890	24.9	39,720	25.7	2.7
Sex							
Male	111,500	48.1	79,340	47.1	72,470	46.9	-1.3
Female	120,100	51.9	88,970	52.9	82,150	53.1	1.3
Race and Hispanic Origin							
White, non-Hispanic	154,800	66.9	118,400	70.3	109,800	71.0	4.2
Black, non-Hispanic	28,800	12.4	19,900	11.8	18,090	11.7	-0.7
Asian, non-Hispanic	11,110	4.8	7,061	4.2	6,603	4.3	-0.5
Other race, non-Hispanic	6,229	2.7	4,235	2.5	3,648	2.4	-0.3
Hispanic (any race)	30,630	13.2	18,720	11.1	16,460	10.6	-2.6

Figure 14.

Reasons for Not Voting: Presidential Elections, 2004-2020

(In percent)



Note: The estimates in this figure are for registered nonvoters.

Source: U.S. Census Bureau, Current Population Survey, November 2004-2020.

If voters are automatically mailed their ballots, then:

- Voter **participation increases** due to convenience
- Voters are able to continue working, reducing **lost wages**
In PA, there is no specific law that requires employers to give employees time off to vote
In 2012, \$544 million in lost wages due to voters taking time off from work
- Voters will not experience discrimination or intimidation at the polling locations
- There is more security & **less interference**

TRUTHS of voting at home:

- Voter **fraud is extremely rare**
- **Ballot tracking** allows voters to track their ballot in every stage of the process
USPS prioritizes mail-in ballots
- You may **only vote once** in an election whether in person or by mail



For more information, visit <https://voteathome.org/>



BARRIERS TO VOTING

Irrespective of voter registration status, young voters reported the following barriers to vote:



52%

need to rearrange their work or school schedule



26%

need help discerning truth vs. fake news



39%

did not know where to vote



25%

need to arrange a ride to the polls



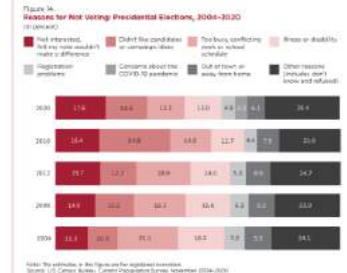
26%

need help with their questions about candidates, ballots and polls



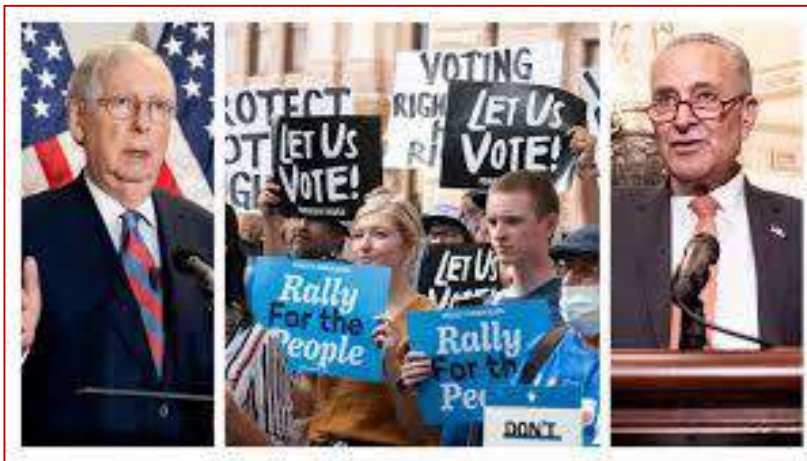
16%

need to find someone to cover their shift





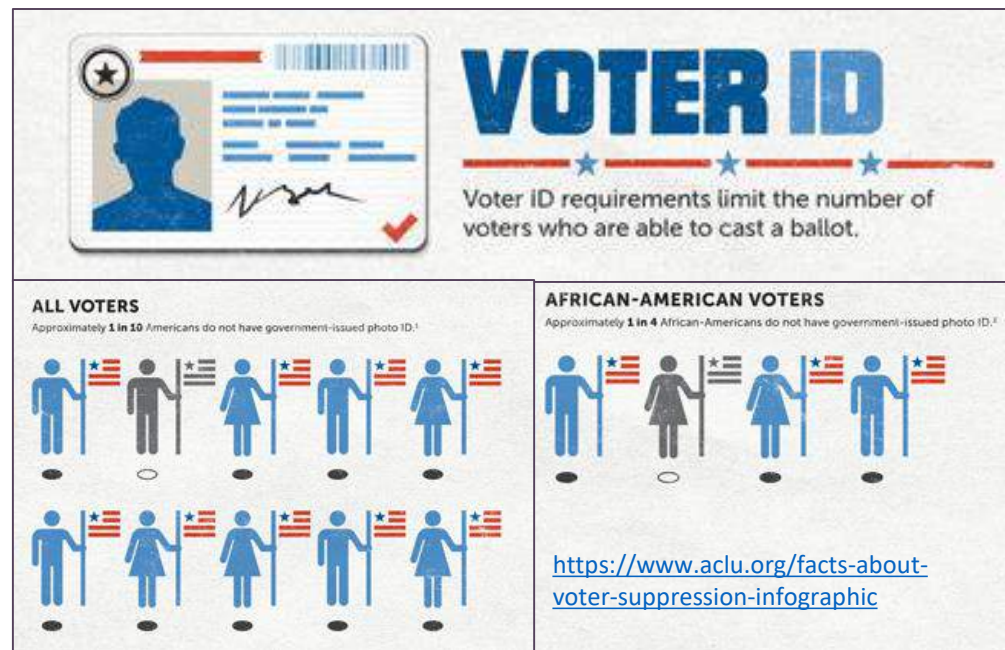
- Voter ID Requirements
- Language Barriers
- Polling Place Closure & Consolidation
- Reduced Voting Hours
- Reduced Early Voting
- Reduced Funding for Voting Access



For more information, visit <https://www.carnegie.org/our-work/article/11-barriers-voting/>



VOTING SECURITY? or SUPPRESSION?



<https://www.theatlantic.com/politics/archive/2018/07/poll-prri-voter-suppression/565355/>



15% percent of Black voters
14% of Hispanic voters
5% of white voters
had trouble finding polling places
on Election Day

>10% of Black & Hispanic voters
3% of white voters
missed the registration
deadline to vote in 2016



Black and Hispanic voters were **2x** as likely as white voters
to have been unable to get off of work for voting

<https://www.theatlantic.com/politics/archive/2018/07/poll-prri-voter-suppression/565355/>



Calling all BIPOC Organizations, Faith Communities, Sororities,
Fraternities, Businesses and Allies!
Call to Action: Take the Challenge!



#OurVoiceShouldBeHeard

A non-partisan multimedia campaign to increase the participation of the under-represented women in the political process through voting and completing the census in Chester County, PA.

Learn more → <https://www.bwcca.org/general-9>



[An Election System that Puts Voters \(Not Politicians\) First](#) By Amber McReynolds

Voting rights expert Amber McReynolds offers a proven alternative: a new process, already happening in parts of the country, that could bring accountability, transparency and equity to the outdated and sputtering system that American democracy currently relies on.

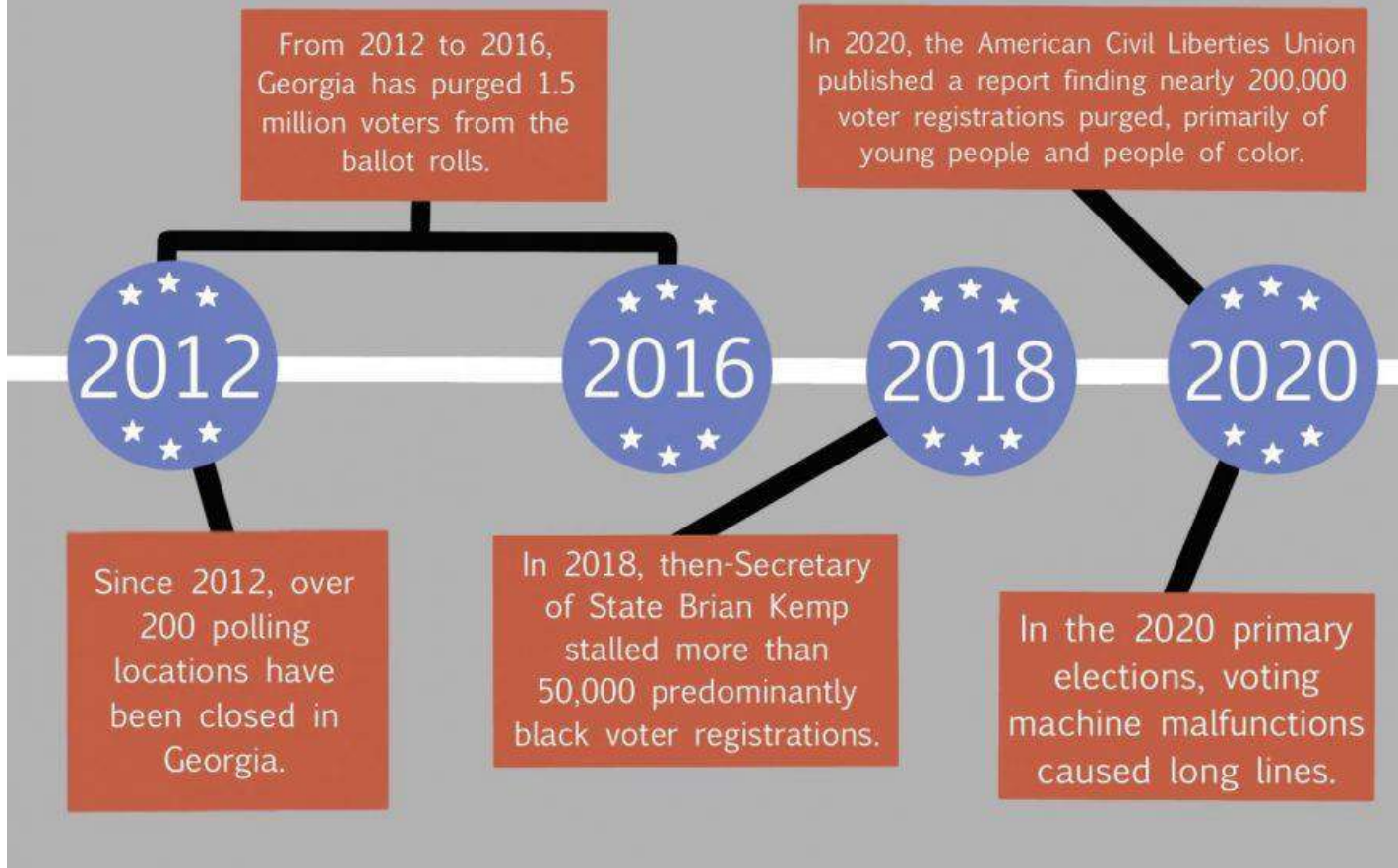


[Stacy Abrams on 3 Ways Voters are Suppressed](#) By Stacy Abrams

Stacey Abrams discusses with Jelani Cobb three ways that voter suppression occurs in America:

- 1-registration access restrictions
- 2-ballot access restrictions
- 3-ballot counting problems

A Short History of Georgia Voter Suppression



COMMUNITY CONVERSATIONS

Join us on Zoom to engage in a conversation about antisemitism.

TUESDAY, OCTOBER 11, 2022 AT NOON



 Register: ChesCoCF.org/explore/Food-for-Thought

COMMUNITY CONVERSATIONS

Join us on Zoom to engage in a conversation about confronting the painful parts of US history.

TUESDAY, NOVEMBER 15, 2022 AT NOON



 Register: ChesCoCF.org/explore/Food-for-Thought

Brief Intros

- Who are you? What brought you to today's Community Conversation?
- What did you want to learn? What have you learned?

Discussion Questions

- From **your perspective**, what do you see as the **biggest barriers** to voting?
- What can we as a community do to increase voter **registration, turnout & access**?
- How do you think the **voting system** should be **reworked**?
- What would a world look like where there is **total voter equality**?



Debbie Bookman (she/her)
Chester County Prothonotary



Cheryl Miles (she/her)
Chairwoman, Black Women of
Chester County In Action



Karen Barsoum (she/her)
Director, Chester County Voter Services